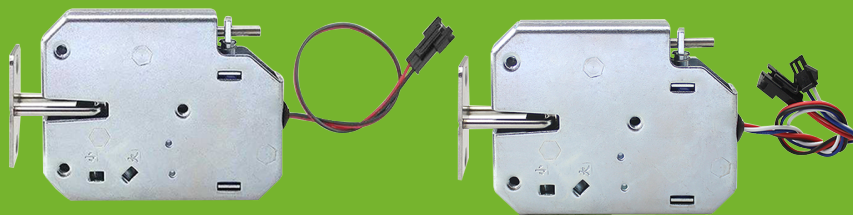


DC12V 1.8A Fail  
Secure Cabinet Lock



CB-93A

CB-93B

Specifications

Fail-secure type	DC12V 1.8A	Fail-secure type	
Voltage	Yes	Voltage	DC12V 1.8A
Signal Output	73 x 58 x 13.3mm	Signal Output	Yes
Lock size		Lock size	73 x 58 x 13.3mm
		Signal output with 4 wires	

CB-93A

CB-93B

Dimensions

